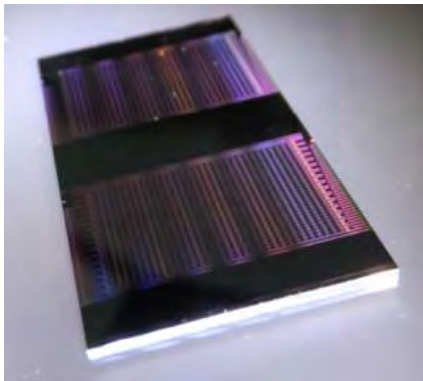


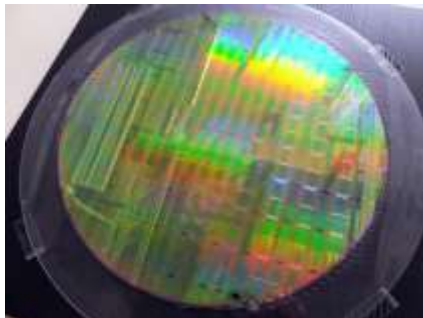
# Silicon Photonics Optical Path Processors

- 8 x 8 silicon photonics switch implemented in the Dynamic Optical Path Network (DOPN) test-bed.
- State of the art silicon photonics (32 x 32 silicon matrix switch, MOSFET integration, 300 mm wafer process, packaging technology).

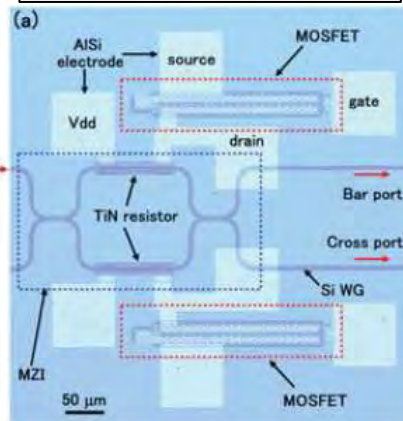
32 x 32 silicon switch



300 mm process



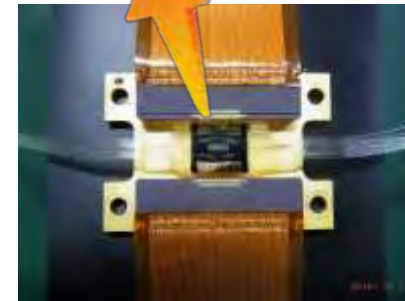
MOSFET integration



8 x 8 silicon switch



DOPN node



Optical & electrical I/O