

VHub – a virtual community and cyberinfrastructure for collaboration in volcano research and risk mitigation

Greg Valentine

José Palma

Center for Geohazards Studies
University at Buffalo, Buffalo, NY, USA

What is VHub?

- An online platform for collaboration in research, modeling, data sharing, education & outreach, and communication related to volcanology and volcanic risk mitigation
- Anyone can use the platform, including contributing content, setting up groups (more on this later)
- Overarching goal is to promote global collaboration in volcanology

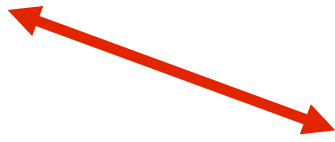
EDUCATION

RESEARCH



DISCOVERY

COLLABORATION





Collaborative volcano research and risk mitigation

Login Register

Vhub.org is a site for collaborative volcano research and risk mitigation. Use the menus above to browse available simulation tools, data resources and links to all things volcanic.

Want to contribute to VHub? Follow **this link** to get started.



FIND CONTENT BY TAGS

Popular Tags:

- IAVCEI Commission on Monogenetic Volcanism
- Remote Sensing Eyjafjallajokull
- Ashfall Graduate Class
- Level: College (Lower level undergrad/nonmajors)
- Level: College (Upper level undergrad/Graduate)
- tephra Resource Type: Course (Multiple Lessons)
- Satellite measurements conference More tags >

Courses, Data Sets/Collections, Educational Materials, Miscellaneous, Offline Tools, Presentations, Publications, Tools, Workshops...
All Categories >

Upload your own content! [Get started >](#)

WHAT'S NEW IN RESOURCES

- Kliuchevskoi_1994_timeline
in Data Sets/Collections, Feb 14, 2012
 - Research collaboration, hazard modeling and dissemination in volcanology with Vhub
in Presentations, Jan 31, 2012
 - Alessandro_24Janmeeting
in Data Sets/Collections, Jan 24, 2012
 - Unrest at VUELCO's target volcanoes
in Data Sets/Collections, Jan 13, 2012
 - Hintz Dissertation Materials
in Data Sets/Collections, Jan 12, 2012
 - Expedicion Geofisica de Santiaguito Blog
in Miscellaneous, Jan 11, 2012
- See what else is new >

UPCOMING EVENTS

- FEB 20** IAVCEI - IAS 4th International Maar Conference: A Multidisciplinary Congress on Monogenetic Volcanism
 - MAY 21** 1st International Congress on management and awareness in protected volcanic landscapes
 - SEP 23** IAVCEI-CCC 4th Collapse Caldera Workshop
 - NOV 19** Cities on Volcanoes 7 (CoV7)
- More events >



Volcano
Observatories

EDUCATION

RESEARCH

Faculty

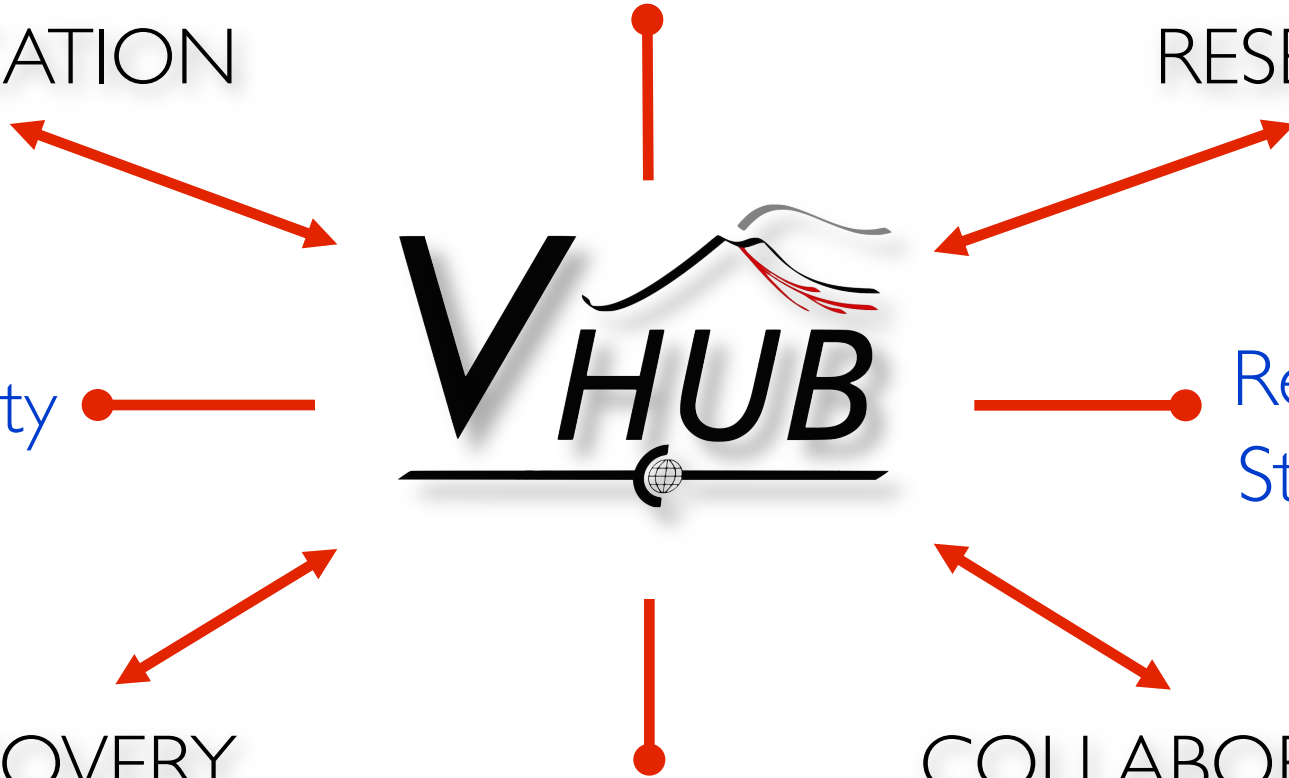


Research
Students

DISCOVERY

COLLABORATION

Stakeholders





You are here: Home » Members

Members

 Search

All Contributors ↓ Contributions ↓ Organization ↓ Name

All Members (1-20 of 709)

All A B C D E F G H I J K L M N O P Q R S T U V W X Y Z

| | | |
|--|------------------------------|-----------------------|
| | Unknown () | 0 Resources, 0 Topics |
| | 2008, Fahmi | 0 Resources, 0 Topics |
| | Abdillah, Muhammad Rais | 0 Resources, 0 Topics |
| | Adepelumi, Adekunle Abraham | 0 Resources, 0 Topics |
| | Adleman, Jennifer Nicole | 0 Resources, 0 Topics |
| | Administrator, Administrator | 0 Resources, 0 Topics |

Site Members

When people join this site and make their profiles public they will appear here.

Use the sorting and filtering options to see members listed alphabetically, by their organization, or the number of contributions they have.

Use the 'Search' to find specific members if you would like to check out their profiles, contributions or message them privately.

Looking for groups?

Go to the [Groups page](#).



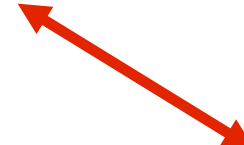
EDUCATION

RESEARCH

Lectures, Workshops,
Teaching Material

DISCOVERY

COLLABORATION





You are here: Home » Resources » Educational Materials

Resources: Educational Materials

Educational Materials Go

| Tag | Resources Sort by Title | Info |
|------------------------------|------------------------------------------|------------------------------------------------------------------------------------------------------------------------------------------------------------------------------------------------------------------------------------------------------------------------------------------------------------------------------------------------------------------------------------------------------------------------------------------------------------------------------------------------------------------------------------------------------------------------------------------------------------------------------------------------------------------|
| [All] | Magma Viscosity | <h3>Tephra Impact Lab - Taupo Volcano</h3> <p>This lab requires students to produce a pre-eruption tephra risk assessment for Taupo volcano, using Tephra2. It requires students to consider the eruptive history of Taupo volcano and a volcanic unrest scenario is provided, so that students must decide what magnitude and style of eruption is most likely -- if an eruption does occur. These estimates must be covered into credible inputs for ... Learn more ></p> <p>Download (PDF)</p> <p>★ 0 review(s) (Review this) .lit 7 user(s) ♥ Add to your favorites!</p> |
| Alaska (1) | Mount St Helens 1980-6 Activity summary | |
| bent (1) | Porosity and Permeability of Magmas | |
| Colima (1) | Probabilistic Analysis of Volcanic ... | |
| debris avalanches (1) | SciNews: A new resource for ... | |
| deformation (1) | Stromboli online | |
| DEM (1) | Surface Deformation | |
| EOT (1) | Tephra Impact Lab - Taupo Volcano | |
| Global Volcanism Program (1) | This Dynamic Planet | |
| guia de usuario (1) | TITAN2D References | |
| isopach (1) | TITAN2D User Guide, Release 2.0, 2007 | |
| lahars (1) | Titan2d user manual (spanish) | |
| Laki (1) | Tutorial for using Titan2D on VHUB | |
| Language: English (7) | Vesuvius Volcano: 79 A.D. Eruption- ... | |
| Language: German (1) | Website about the Montserrat volcano ... | |

Top Rated

TITAN2D User Guide, Release 2.0, 2007 [Edit](#)

★★★★★ 0.0 out of 5 stars

The following are top-rated resources of this type.

07 Jan 2011 Educational Materials Contributor(s): Abani Patra, E Bruce Pitman

This is a user guide for TITAN2D, Mass Flow Simulation Tool, created by the Geophysical Mass Flow Group (GMFG), University at Buffalo. Although this user guide describes the use of Titan2D via a python-built graphical user interface (GUI) that runs on linux machines (release 2.0, July 2007), this ...

TITAN2D References [Edit](#)

★★★★★ 0.0 out of 5 stars

22 Jan 2011 Educational Materials Contributor(s): Sarah Elizabeth Ogburn

Contains a list of references about TITAN2D, specifically a list of volcanoes and types of flows for which it has been used.

Browser window: vhub - Resources: AshFall: A graduate course in volcanology with substantial meteorological content
URL: https://vhub.org/resources/411

Navigation: HOME MY HUB MEMBERS **RESOURCE WAREHOUSE** EXPLORE SUPPORT ABOUT Help!

Breadcrumbs: You are here: Home » Resource Warehouse » Courses » AshFall: A graduate course in volcanology with ... » About

AshFall: A graduate course in volcanology with substantial meteorological content

By William I Rose
Michigan Technological University

Michigan Tech's AshFall course By W series of lectures was put together i part of a graduate level course whic evaluations of ashfall models, compa with actual ashfall ...

Additional materials available (1)


0 Citation(s)
0 review(s) (Review this)
Add to your favorites!

Share: Facebook Twitter Google+ ...


Browser window: https://vhub.org/resources/473/download/Ashfall3.1.mov
URL: https://vhub.org/resources/473/download/Ashfall3.1.mov

Eruption Columns

Ashfall Class 2009
Lecture #3



G. Pouillet Scrope, Masson, 1864



00:03 -55:59



You are here: Home » Resources » Workshops

Resources: Workshops

Workshops Go

| Tag | Resources <input type="button" value="Sort by Title"/> | Info |
|-----------------------|--------------------------------------------------------|-----------------------------------|
| [All] | Eyjafjallajökull, volcanic clouds and ... | Select a resource to see details. |
| ash transport (1) | Ground-based and remote sensing of ... | |
| ashfall (1) | IUGG 2011 Workshop VW01: VHub ... | |
| ASTER (1) | Keilir Conference Summary | |
| aviation (2) | Large-Scale Experiments Workshop | |
| Cordon Caulle (1) | PASI: Volcanic Hazards and Remote ... | |
| Costa Rica (1) | | |
| debris avalanches (1) | | |
| Differential GPS (1) | | |
| DOAS (1) | | |
| eclipse (1) | | |
| eruption columns (1) | | |
| Eyjafjallajökull (2) | | |
| FLIR (1) | | |
| FTIR (1) | | |

Top Rated

Keilir Conference Summary Edit

★★★★★ 0.0 out of 5 stars

The following are top-rated resources of this type.

29 Sep 2010 Workshops Contributor(s): Marcus I Bursik

Summary statement for the Atlantic Conference on Eyjafjallajökull and Aviation 15-16 September 2010, Keflavik Airport, Iceland. Contains links to other material. Freely available for redistribution.
<http://en.keilir.net/keilir/conferences/eyjafjallajokull/>

Large-Scale Experiments Workshop Edit

★★★★★ 0.0 out of 5 stars

08 Oct 2010 Workshops Contributor(s): Greg A Valentine, Pierfrancesco Dellino, Costanza Bonadonna, Amanda Bachtell Clarke

This workshop aimed at developing research priorities and initial design concepts for an international user facility for large-scale experimentation on volcanic processes. Agenda .pdf Presentations Introduction by Greg Valentine .pdf .mov Integrating numerical and laboratory models of ...




Large-Scale Experiments Workshop edit




By [Greg A Valentine](#)¹, [Pierfrancesco Dellino](#)¹, [Costanza Bonadonna](#)², [Amanda Bachtell Clarke](#)¹

1. University at Buffalo, SUNY (UB) 2. University of Geneva, Switzerland

View Workshop Series

Additional materials available (7)

-  Audio podcast
-  Video podcast
-  Slides/Notes podcast

0 Citation(s)
0 review(s) (Review this)
47 user(s)
Add to your favorites!
Share:    ...

About Citations Reviews Supporting Docs

SEE ALSO
No results found.

Category **Workshops**

Abstract This workshop aimed at developing research priorities and initial design concepts for an international user facility for large-scale experimentation on volcanic processes.

Agenda .pdf

Presentations

Introduction by *Greg Valentine* .pdf .mov

Integrating numerical and laboratory models of explosive eruptions with field observations by *Amanda Clarke* .pdf

Pyroclastic density currents and deposits by *Gert Lube* .pdf

Dirty plumes, tephra dispersion and deposition by *Shannon Kobs* .pdf .mov

Craters, diatremes and (unstable) conduits by *James White* .pdf .mov

Magma-water interaction by *Bernd Zimanowski* .pdf .mov

Debris avalanches by *Karine Bernard* .pdf .mov

Ground-based remote sensing by *Matthias Hort* .pdf .mov

Overview of ECLIPSE campus by *Andre Filiatraut* .pdf

Practical experience from large-scale experiments by *Piero Dellino* .pdf .mov

Engineering considerations for large-scale experimentation by *Daniel Fuglewicz* .pdf



EDUCATION

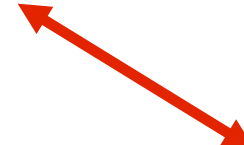
RESEARCH

Lectures, Workshops,
Teaching Material

Data and Model
Warehouse

DISCOVERY

COLLABORATION





You are here: Home » Resource Warehouse » Tools

Resources: Tools

Tools Go

| Tag | Resources <input type="text" value="Sort by Title"/> | Info |
|-----------------------------|------------------------------------------------------|-----------------------------------|
| [All] | Bent - Atmospheric Plume Analysis | Select a resource to see details. |
| ash (1) | DEM converter for Titan2D | |
| ash transport (2) | Hazmap | |
| atmospheric plume (1) | Tephra2 | |
| Colima (1) | Tephra2: Student Version | |
| DEM (1) | Titan2D Mass-Flow Simulation Tool | |
| Digital Elevation Model (1) | Titan2D Viewer | |
| education (1) | Workspace | |
| eruption column (1) | | |
| isopach (1) | | |
| lab (1) | | |
| natural hazards (2) | | |
| particles (1) | | |
| sedimentation (1) | | |
| tephra (2) | | |

Top Rated

Titan2D Viewer Edit

28 Jun 2011 Tools Contributor(s): Jose Luis Palma
A viewer of the simulation results saved by Titan2D

★★★★★ 4.0 out of 5 stars

The following are top-rated resources of this type.

Workspace Edit

23 Feb 2010 Tools
Workspace

★★★★★ 0.0 out of 5 stars

Bent - Atmospheric Plume Analysis Edit

17 Mar 2010 Tools Contributor(s): Marcus I Bursik
Atmospheric Plume Analysis

★★★★★ 0.0 out of 5 stars



EDUCATION

RESEARCH

Lectures, Workshops,
Teaching Material

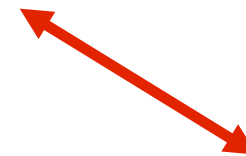
ONLINE
SIMULATIONS

Groups, Topic Pages,
Q&A, Events, Blogs

DISCOVERY

COLLABORATION

Data and Model
Warehouse



Titan2D Mass-Flow Simulation Tool

Storage (manage)
24%

Tool Questions? About Refresh Window Popout Close

Titan

Load/Save GIS General Material Map Piles Flux Sources Discharge Planes Job Submission Job Monitor

Number of Computational Cells Across Smallest Pile/Flux-Source ... 20

Scale Parameters

Scale Simulation True False

Scale Length 20000

Maximum Number of Time Steps 300000

Maximum Time 1000

Time Between Results Output 20

Time Between Saves 90

Adapt the Grid True False

Visualizaton Output Type(s)

- mshplotXXX.plt
- tecplotXXX.plt
- Web Viz
- HDF/XDMF/Paraview
- GMFG

Import/Export Titan

866 x 469

Titan2D Mass-Flow Simulation Tool

Storage (manage)
24%

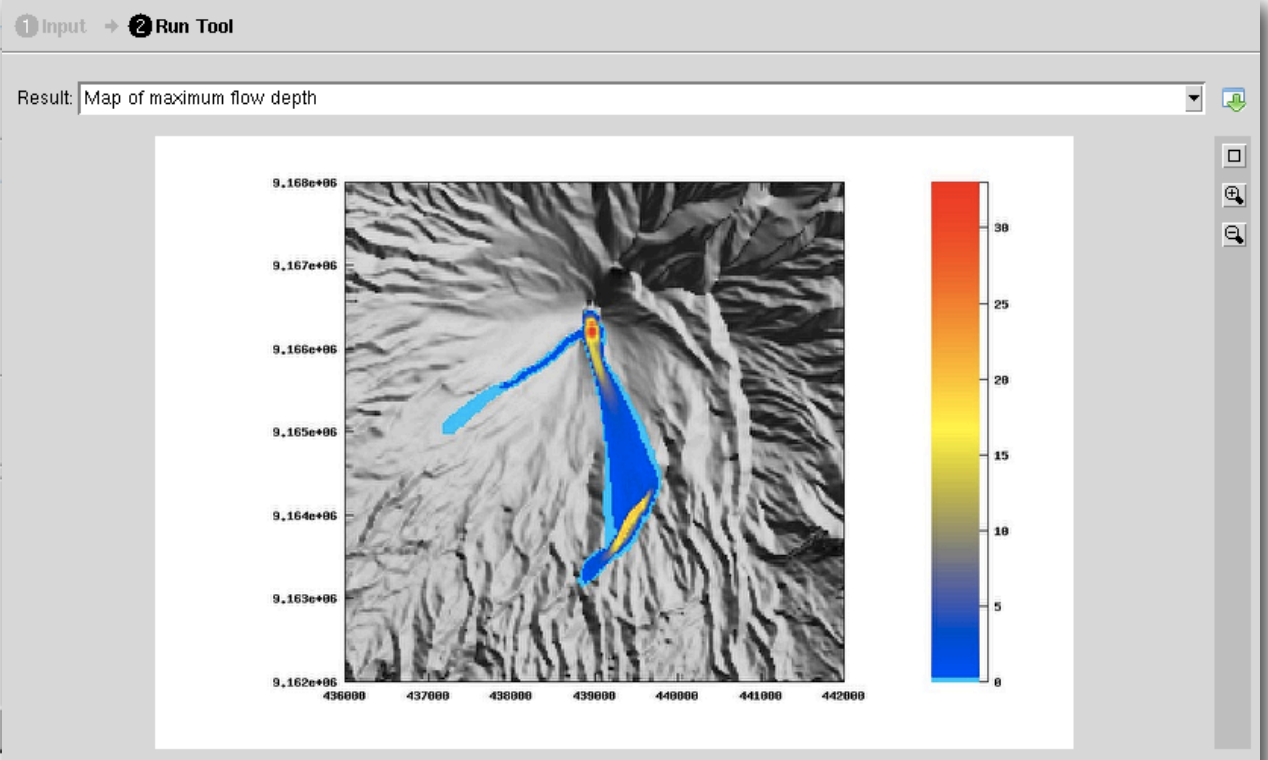
Tool Questions? About Refresh Window Popout Close

Titan

Load/Save GIS General Material Map Piles Flux Sources Discharge Planes Job Submission Job Monitor

Number of Computational Cells Across Smallest Pile/Flux-Source ... 20

- Scale Parameters
- Scale Simulation
- Scale Length
- Maximum Number of Time Steps
- Maximum Time
- Time Between Results Output
- Time Between Saves
- Adapt the Grid
- Visualizaton Output Type(s)
- Import/Export



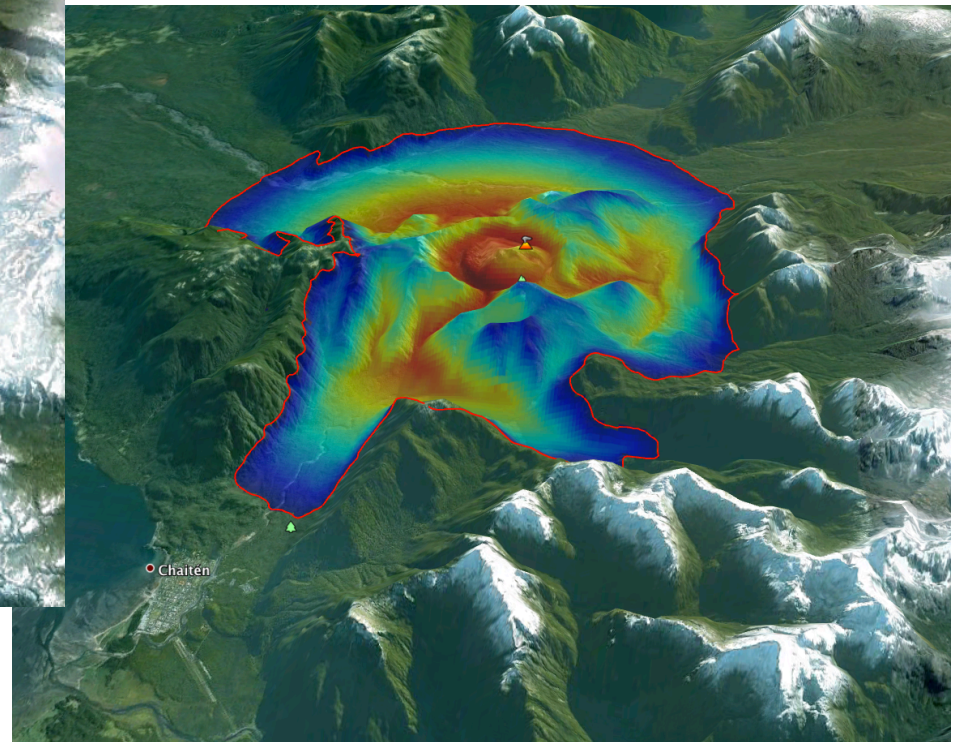
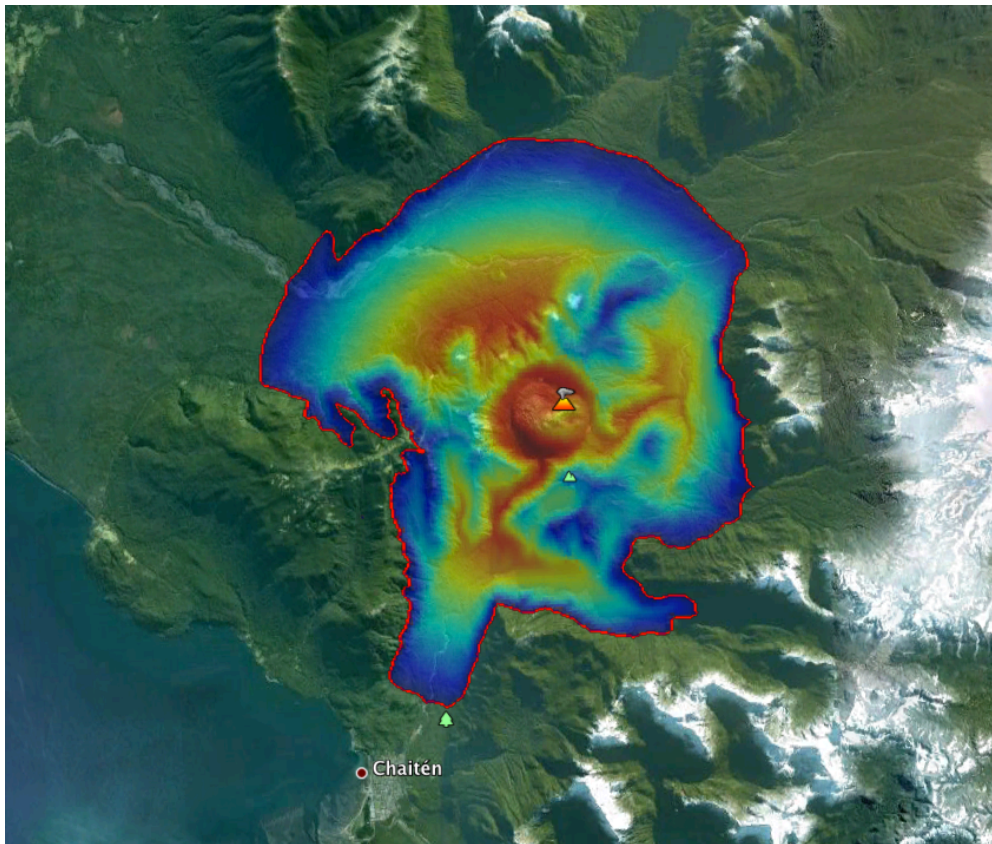
2 results Parameters... Clear

Applet VncViewer started

< Input

Implementing simple visualization tools

Example - Simple energy line model for pyroclastic flows, visualized with Google Earth





EDUCATION

RESEARCH

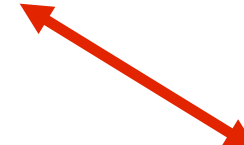
Lectures, Workshops,
Teaching Material

Groups, Topic Pages,
Q&A, Events, Blogs

Data and Model
Warehouse

DISCOVERY

COLLABORATION





You are here: Home » Groups » Lunar Crater Volcanic Field Group



Lunar Crater Volcanic Field Group

About the Group

Show Public Description (+)

Online working group for the Lunar Crater Project Team.

Group Members

View all members →



Amanda Rachel Hintz



Peter Johnson



Eugene Smith



Sonja Mae Melander



Jamal Amin



Christine Rasoazanamparany



Joaquin Alberto Cortes

Group manager

Show Manager Controls ▾

Managers:

Greg A Valentine, Dawn Catherine Sweeney Ruth, Amanda Rachel Hintz, Elisabeth Widom, David Kuentz, Joaquin Alberto Cortes, Christine Rasoazanamparany, Eugene Smith

Members:

14

Discoverability:

Visible

Policy:

Invite Only

Created:

16 Sep. 2010

Tags:

[none]

Overview

Members

Wiki

Resources

Discussion

Messages

Blog

Wish List

Calendar





IAVCEI Commission on Monogenetic Volcanism

Overview

[Members](#)
[Wiki](#)
[Resources](#)
[Discussion](#)
[Messages](#)
[Blog](#)
[Wish List](#)
[Calendar](#)

About the Group

The term *monogenetic* as applied to volcanic systems carries with it the concept of eruptions of batches of magma within short timescales. Monogenetic volcanism is commonly expressed as clusters of individual volcanoes forming fields of small cones which are a consequence of dispersed plumbing systems feeding discrete batches of magma to the Earth's surface. Beyond this relatively simple concept there is a wide range of temporal, spatial and compositional variables.

The new IAVCEI commission, Commission on Monogenetic Volcanism (CMV) main goal is to provide a forum for researchers to define and understand the phenomenon of small volume magmatic systems and their surface expression as volcano fields. The CMV aim is to take leading role to facilitate, coordinate and focus research and research outputs in regard to monogenetic volcanism and to assist to researchers to develop a refined and unified model of this type of volcanism.

Basic scientific questions, such as the monogenetic nature of these commonly small-volume, small magma output volcanoes are currently frontline research subjects showing growing evidence to develop a more suitable and united model for the formation of these volcanoes from an interdisciplinary perspective. The IAVCEI Commission on Monogenetic Volcanism will serve a mediating and facilitating role in this scientific process as well as provide an interface to disseminate fragmented research effort to be possible to view in a broader perspective.

The coordinators of the Commission are:
 Dr. Karoly Nemeth (k.nemeth@massey.ac.nz)
 Dr. Ian E Smith (ie.smith@auckland.ac.nz)
 Dr Adrian Pittari (apittari@waikato.ac.nz)

Group member

[Show Member Controls](#)

Managers:

[Amanda Rachel Hintz, Karoly Nemeth, Adrian Pittari](#)

Members:

47

Discoverability:

Visible

Policy:

Open

Created:

27 Jul. 2011

Tags:

[diatremes](#)

[fissure eruptions](#)

[hawaiian eruptions](#)

[hazard analysis](#)



Collaborative volcano research and risk mitigation

Greg A Valentine (gvalentine) Logout My Account My HUB 125 New Messages

You are here: Home » Groups » Asociación Latinoamericana de Volcanología, ALVO



Overview

Overview - English

Members

Wiki

Resources

Discussion

Blog

Wish List

Calendar

Asociación Latinoamericana de Volcanología, ALVO

About the Group

Show Public Description (+)

La Asociación Latinoamericana de Volcanología (ALVO) fue creada formalmente el 7 de Noviembre de 2010, en Manizales, Colombia. Su creación fue anunciada durante la conmemoración del aniversario número 25 de la erupción del volcán Nevado del Ruiz. Durante esta conferencia, y con la participación de delegados de México, Guatemala, El Salvador, Nicaragua, Costa Rica, Panamá, Colombia, Ecuador, Perú, Argentina y Chile, el comité ejecutivo fue electo como sigue:

Presidente

Hugo Delgado Granados (UNAM, México)

Vice Presidente

José Viramonte (UNSA-CONICET, Argentina)

Secretario General

Martha Calvache (INGEOMINAS, Colombia)

Tesorero

Sofía Navarro (INGEOMINAS, Colombia)

Consejos Regionales

- * Norteamérica : Enrique Guevara (CENAPRED, México)
- * Centroamérica : María Martínez (OVSICORI, Costa Rica)
- * Sudamérica Norte : Gloria Patricia Cortés (INGEOMINAS, Colombia)
- * Sudamérica Sur: Felipe Aguilera (Universidad de Atacama, Chile)

El principal propósito de ALVO es reforzar y promover los lazos entre volcanólogos latinoamericanos. ALVO también promueve la colaboración internacional entre países latinoamericanos y otros países del mundo.

Group Members

View all members →



Jose L. Palma



Felipe Aguilera



Ramón Espinasa-Pereña



Nick Varley



Hugo Delgado-Granados

Joomla Admin

Show Admin Controls ▾

Managers:

Jose L. Palma, Hugo Delgado-Granados, Felipe Aguilera

Members:

5

Discoverability:

Visible

Policy:

Restricted

Created:

21 Nov. 2010

Tags:

- ALVO
- Argentina
- Chile
- Colombia
- Costa Rica
- Ecuador
- El Salvador
- Guatemala
- Latin America
- Mexico
- Nicaragua
- Panama
- Peru

Motivation for VHub

- Originally, VHub was motivated primarily by modeling issues
- However, other items from previous slides have grown to equal importance

Bridging between development and application

- create a mechanism that facilitates closer links between development and application
- provide some tools and models for online execution for observatories that lack computing infrastructure
- standardization of the documentation associated with input data, source code, and output data in collaborative work and in order to ensure traceability and transparency for model results that are used in decision making processes

Welcome Christian - Project Overview

[Edit Profile](#)

[Home](#) | [Select Project](#) | [Project Overview](#)

Madison County Mudslide Project

[Modify](#)

Project Goal

To prepare the Madison County GIS data for GeoWEPP; determine the soil loss for each contributing area as inputs into the TITAN mass flow simulation

Team Members / Roles

First Last [userName](#): user Role
 First Last [userName](#): user Role
 First Last [userName](#): user Role

Last edit on:

09/08/2007 00:11:47

Last edit by:

First Last [userName](#): user Roles

Project Overview

| Project Design | Source Data | Valid Data | Input Data | Output Data | Output Analysis | Output Validation | Project Report |
|-----------------------------------------------------------------------------------------------------------------------------------------------------------------|-------------------------------------------------------------------------------------------------------------------------------------------------------------------|-------------------------------------------------------------------------------------------------------------------------------------------------------------------|-------------------------------------------------------------------------------------------------------------------------------------------------------------------|-------------------------------------------------------------------------------------------------------------------------------------------------------------------|-------------------------------------------------------------------------------------------------------------------------------------------------------------------|-------------------------------------------------------------------------------------------------------------------------------------------------------------------|-------------------------------------------------------------------------------------------------------------------------------------------------------------------|
| State: 000% complete Certification: Begun Comments: 000 new of 000 total Last Edit: Aug 7, 2007 | State: 000% complete Certification: Pending Comments: 000 new of 000 total Last Edit: Aug 7, 2007 | State: 000% complete Certification: Pending Comments: 000 new of 000 total Last Edit: Aug 7, 2007 | State: 000% complete Certification: Pending Comments: 000 new of 000 total Last Edit: Aug 7, 2007 | State: 000% complete Certification: Pending Comments: 000 new of 000 total Last Edit: Aug 7, 2007 | State: 000% complete Certification: Pending Comments: 000 new of 000 total Last Edit: Aug 7, 2007 | State: 000% complete Certification: Pending Comments: 000 new of 000 total Last Edit: Aug 7, 2007 | State: 000% complete Certification: Pending Comments: 000 new of 000 total Last Edit: Aug 7, 2007 |

Project Workflow

[Relationships View](#)
[Timeline View](#)

1) Project Design

2) Source Data

3) Valid Data

4) Input Data

5) Output Data

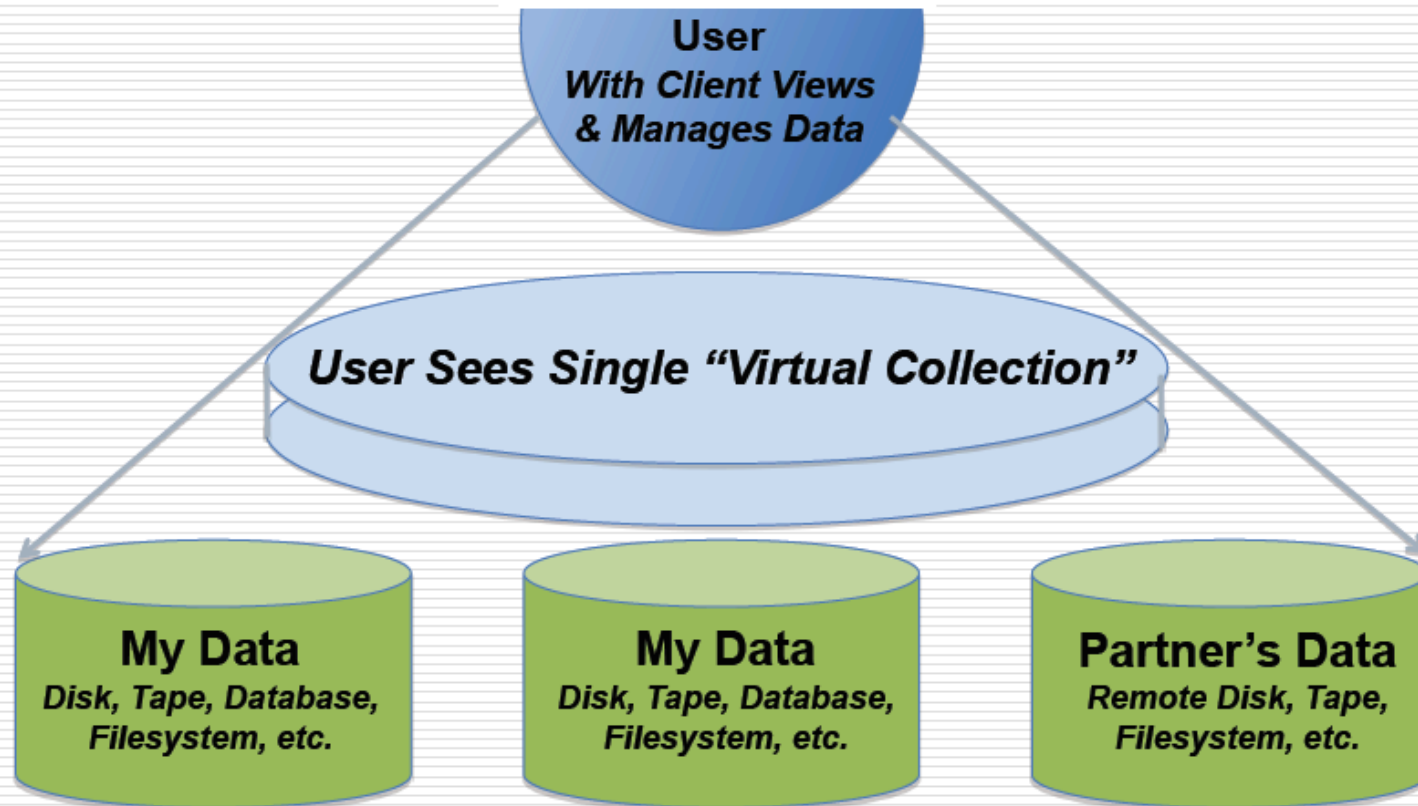
6) Output Analysis

7) Output Validation

Data in VHub

- Vhub's "data" goals are focused on facilitating access and use of data and databases, but it is not itself a database-making project
- VHub will host some datasets and will link to others that reside at their owners' sites.
 - Ground-based and remote sensing datasets on eruptions
 - deposit and eruption parameter datasets
 - experimental datasets
- Data assimilation and propagation
 - provide mechanisms for working with datasets at various locations
 - iRODS middleware provides distributed data services in grid-based environment irods.org

iRODS Shows Unified “Virtual Collection”



The iRODS Data System can install in a “layer” over existing or new data, letting you view, manage, and share part or all of diverse data in a unified Collection.



THE UNIVERSITY
of NORTH CAROLINA
at CHAPEL HILL



Vhub.org

Collaborative Volcano Research and Risk Mitigation

Collaborating Research Groups

| Institution | Primary Contact(s) |
|--------------------------------------------------------------------------------|---------------------------------|
| Istituto Nazionale di Geofisica e Vulcanologia (Rome, Pisa, and Naples; Italy) | W. Marzocchi, A. Neri, A. Costa |
| Bristol University (UK) | R.S.J. Sparks |
| Massey University (New Zealand) | S. Cronin |
| Geological Survey of Japan | S. Takarada |
| Institute of Earth Sciences 'Jaume Almera' (Spain) | J. Marti |
| Institut de Physique du Globe de Paris | J.-C. Komorowski |
| Université Blaise Pascal, Clermont Ferrand (France) | T.H. Druitt |
| Earthquake Research Institute (Japan) | T. Koyaguchi |
| Instituto de Geofísica, Universidad Nacional Autónoma de México | J.L. Macias |
| Arizona State University (USA) | A. Clarke |
| Los Alamos National Laboratory (USA) | S. Dartevelle |
| Università degli Studi de Napoli Federico II (Italy) | C. Scarpati |
| Université de Genève (Switzerland) | C. Bonadonna |
| Universität Hamburg (Germany) | M. Hort |
| Barcelona Supercomputer Center (Spain) | A. Folch |
| U.S. Geological Survey – Cascade Volcano Observatory (USA) | L. Mastin |
| Smithsonian Institution (USA) | E. Cottrell, L. Siebert |



Vhub.org

Collaborative Volcano Research and Risk Mitigation

Partner Volcano Observatories

| Institution | Primary Contact(s) |
|--------------------------------------------------------------------------------|---------------------------------|
| Istituto Nazionale di Geofisica e Vulcanologia (Rome, Pisa, and Naples; Italy) | W. Marzocchi, A. Neri, A. Costa |
| British University (UK) | P. Sparks |
| Osservatorio Vesuviano (Italy) | A. Costa |
| Observatorio Vulcanológico y Sismológico – Pasto (Colombia) | M. Calvache |
| Montserrat Volcano Observatory | P. Cole |
| Université Blaise Pascal, Clermont Ferrand (France) | T.H. Druitt |
| Earthquake Research Institute (Japan) | T. Koyaguchi |
| Instituto de Geofísica, Universidad Nacional Autónoma de México | J.L. Macias |
| Arizona State University (USA) | A. Clarke |
| Los Alamos National Laboratory (USA) | S. Dartevelle |
| Università degli Studi de Napoli Federico II (Italy) | C. Scarpati |
| Université de Genève (Switzerland) | C. Bonadonna |
| Universität Hamburg (Germany) | M. Hort |
| Barcelona Supercomputer Center (Spain) | A. Folch |
| U.S. Geological Survey – Cascade Volcano Observatory (USA) | L. Mastin |
| Smithsonian Institution (USA) | E. Cottrell, L. Siebert |



Vhub.org

Collaborative Volcano Research and Risk Mitigation

Development Team

| Institution | Primary Contact(s) |
|--------------------------------------------------------------------------------|---------------------------------|
| Istituto Nazionale di Geofisica e Vulcanologia (Rome, Pisa, and Naples; Italy) | W. Marzocchi, A. Neri, A. Costa |
| British University (UK) | P. Sparks |
| Osservatorio Vesuviano (Italy) | A. Costa |
| Observatorio Vulcanológico y Sismológico – Pasto (Colombia) | M. Calvache |
| Montserrat Volcano Observatory | P. Cole |
| Université Blaise Pascal, Clermont Ferrand (France) | T.H. Druitt |

| Institution | Primary Contact(s) |
|------------------------------------------------------------|------------------------------------------------------------------------------------------------------------------------------------------------|
| Earthquake Research Ins | |
| Instituto de Geofísica, Un | G. Valentine, M. Jones, S. Gallo, E. Calder, M. Bursik, B. Pitman, D. Moore-Russo, C. Renschler, M. Sheridan, J. Bajo, S. Melander, J.L. Palma |
| Arizona State University | |
| Los Alamos National Lab | S. Carn, W. Rose |
| Università degli Studi de | |
| Università de Genève (Sw | |
| Universität Hamburg (Ge | C. Connor, L. Connor, L. Courtland |
| Barcelona Supercompute | |
| U.S. Geological Survey – Cascade Volcano Observatory (USA) | L. Mastin |
| Smithsonian Institution (USA) | E. Cottrell, L. Siebert |



Vhub.org

Collaborative Volcano Research and Risk Mitigation

Advisory Team

| Institution | Institution | Primary Contact(s) |
|---------------------------------------------------------------------------|--------------------------------------------------|------------------------------------------------------------------------------------------------------------------------------------------------|
| Istituto Nazionale di Geofisica e Vulcanologia (Italy) | USGS Volcano Hazards Program | J. Eichelberger |
| British University (UK) | Earthquake Research Institute & IAVCEI President | S. Nakada |
| Osservatorio Vesuviano (Italy) | University of East Anglia | J. Barclay |
| Observatorio Vulcanológico y Sismológico – Montserrat Volcano Observatory | San Diego Supercomputer Center | C. Baru |
| | Georgia Institute of Technology | J. Dufek |
| | F. Cole | Komorowski |
| Université Blaise Pascal, Clermont Ferrand (France) | | T.H. Druitt |
| Earthquake Research Institute | Institution | Contacts |
| Instituto de Geofísica, Universidad Nacional Autónoma de México | University at Buffalo | G. Valentine, M. Jones, S. Gallo, E. Calder, M. Bursik, B. Pitman, D. Moore-Russo, C. Renschler, M. Sheridan, J. Bajo, S. Melander, J.L. Palma |
| Arizona State University | Michigan Technological University | S. Carn, W. Rose |
| Los Alamos National Laboratory | University of South Florida | C. Connor, L. Connor, L. Courtland |
| Università degli Studi di Padova | | |
| Université de Genève (Switzerland) | | |
| Universität Hamburg (Germany) | | |
| Barcelona Supercomputing Center | | |
| U.S. Geological Survey – Cascade Volcano Observatory (USA) | | L. Mastin |
| Smithsonian Institution (USA) | | E. Cottrell, L. Siebert |

