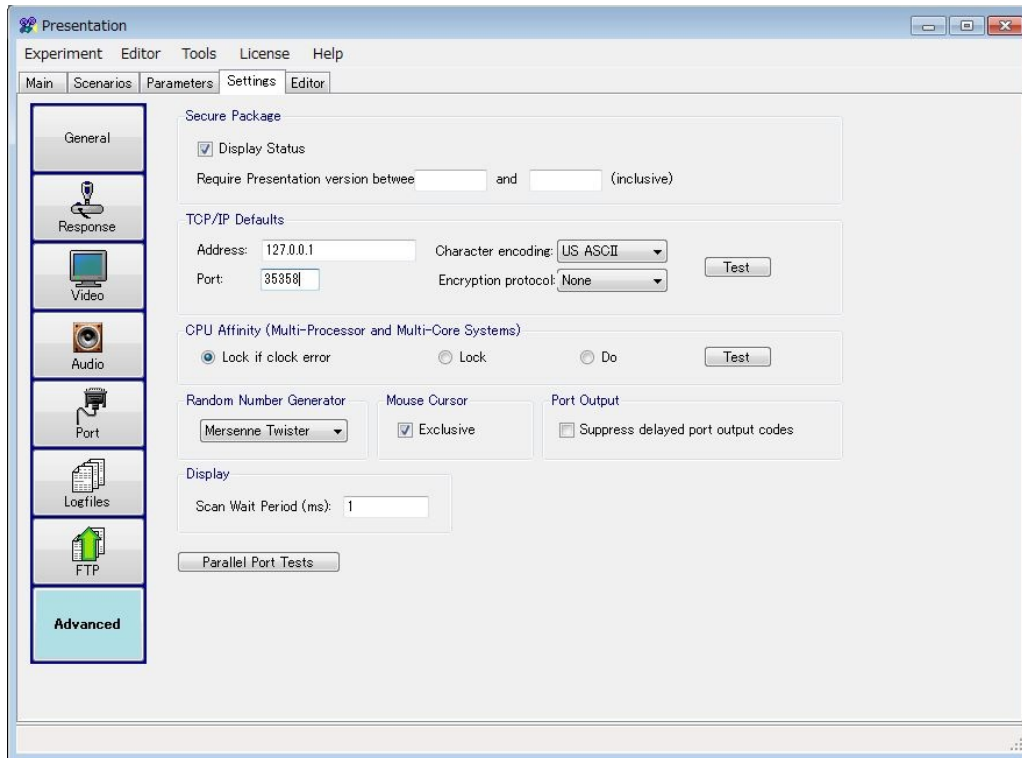
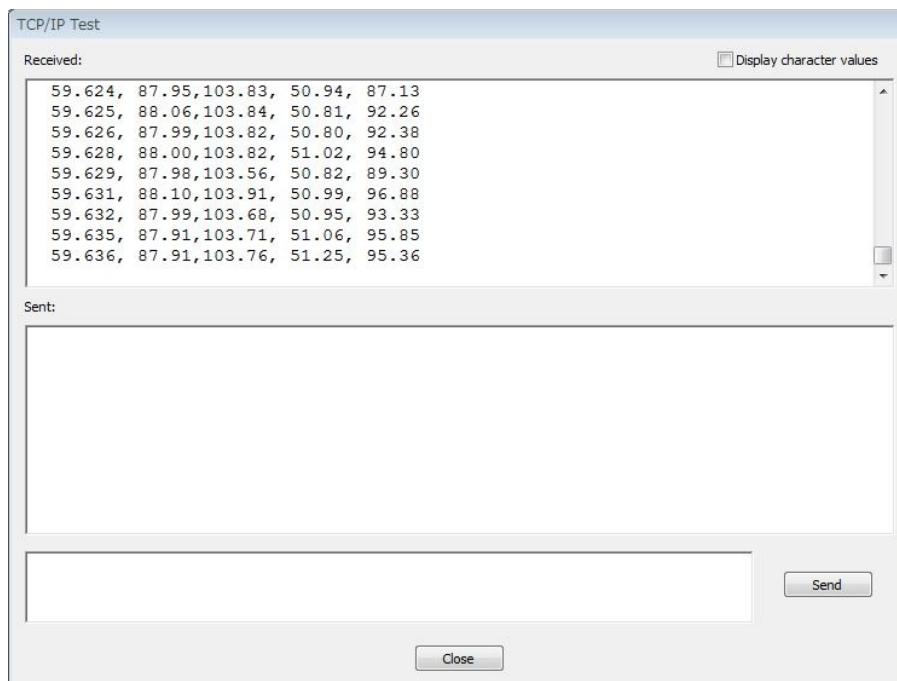


Communicate to Presentation( TCP/IP)

Port 35358 (fix now, next version, it will change any port you want).  
Address , input IP address of computer which running iRecHS2.exe.  
if running iRecHS2.exe and Presentation in same PC, 127.0.0.1



Push Test Button,  
Time,x coordinate, y coordinate, pupil radius, eye open ratio (%) will be received.



x,y data are same as iRecHS2/Graph data, depends on menu->Output.