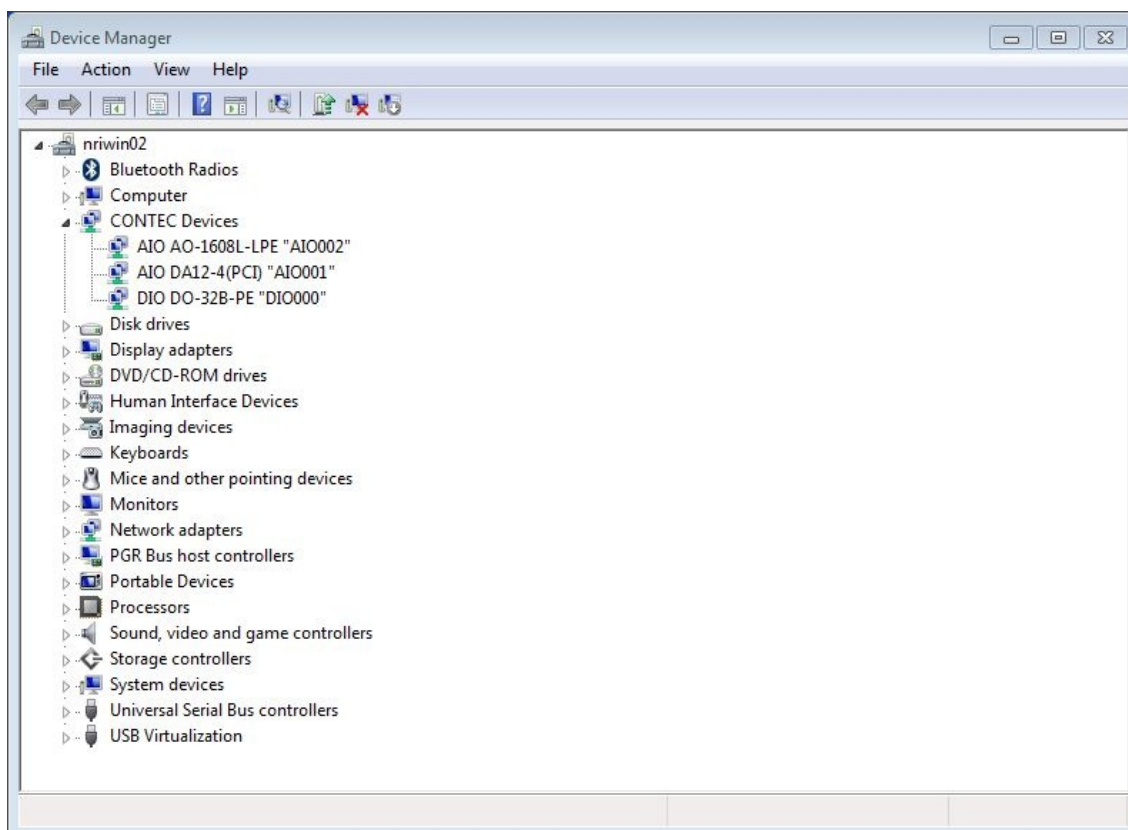


Control Panel->Device Manager

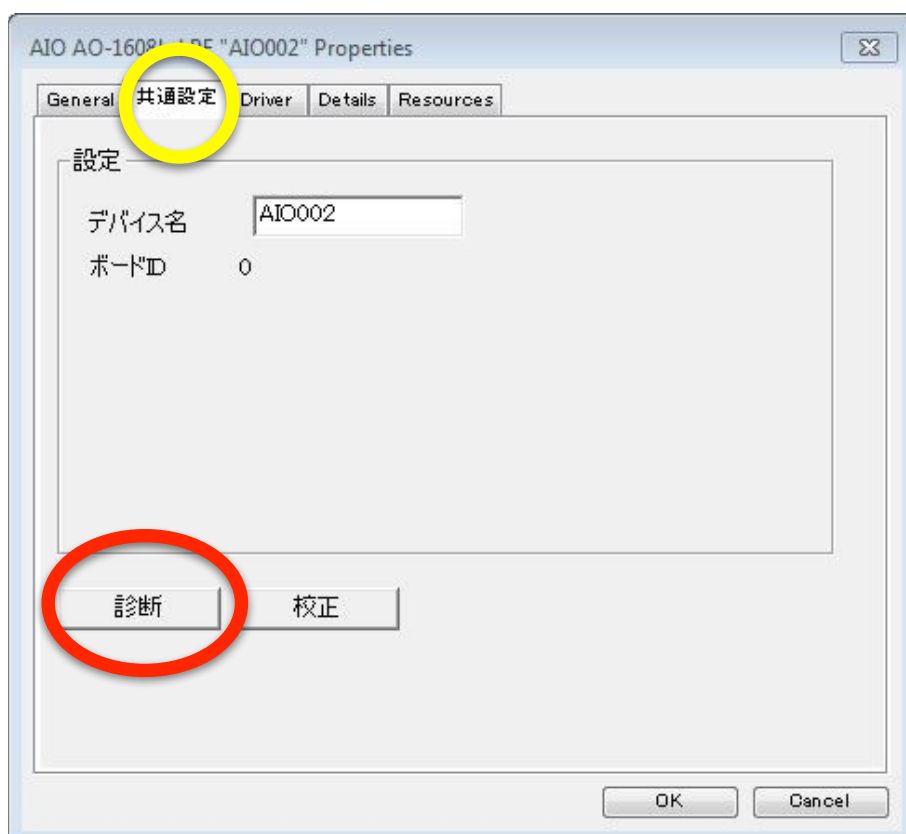
Find CONTEC Devices->AIO AO-1604L-LPE "AIO000"



I use "AIO AO-1608L-LPE", "AIO DA12-4(PCI)", "DIO DO-32B-PE". Please read AIO AO-1608L-LPE as AO-1604L-LPE.

Double Click AIO AO-1608L-LPE "AIO0002"(double click AIO AO-1604L-LPE "AIO0000"

in your environment, I think.)



Click the Tab(yellow circle).

Then click the button(red circle).

Check Analog output with a oscilloscope.

Channel 0 connect to 25(AO-00) 24(AO GND)

Channel 1 connect to 23(AO-01) 22(AO GND)

Channel 2 connect to 50(AO-02) 49(AO GND)

Channel 3 connect to 48(AO-03) 47(AO GND)

http://www2.contec.co.jp/dl_data/LYGF33/LYGF33_090904.pdf

