

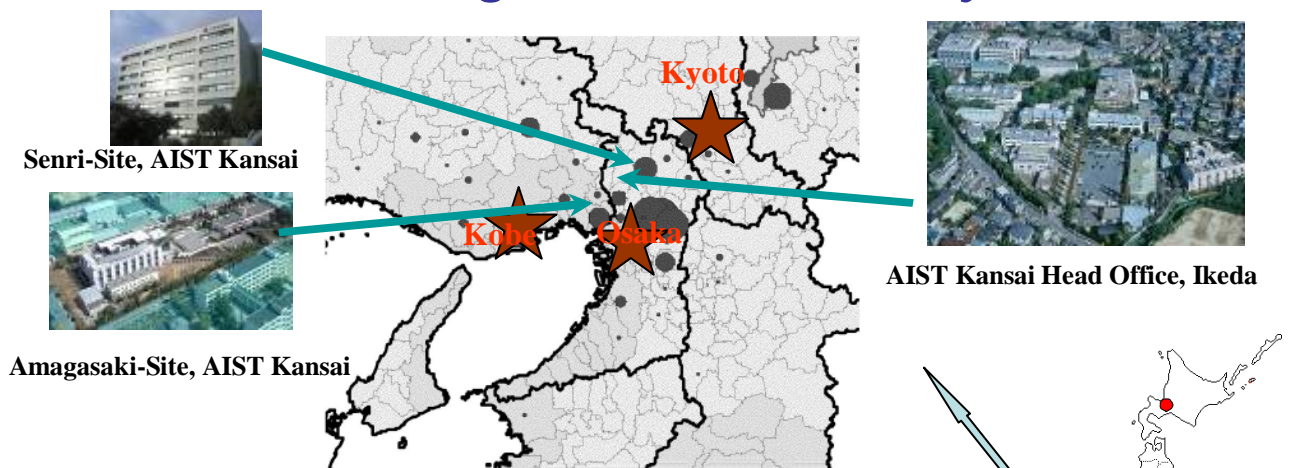


AIST Kansai

National Institute of Advanced Industrial Science and Technology (AIST)
2009.11.26



***We contribute to creating industrial innovation
in Kansai mega-region
toward global sustainability.***

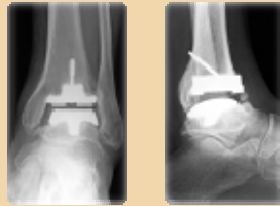


- Scale of Economy in the Kansai mega-region is almost a half of that in Tokyo: famous for so-called panel bay, green bay, etc.
- World top-ranked universities, research institutes and industries are located here in Kansai.

- Research basis of AIST are located all over Japan.
- AIST Kansai is the second largest after Tsukuba.

Three Major Research Areas in AIST Kansai

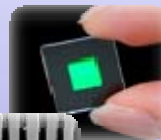
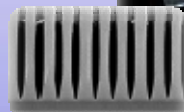
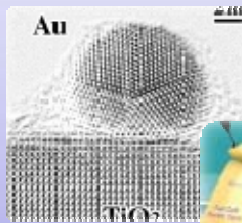
Life Engineering



High
Quality of
Life

- Health Technology Research Center
- Research Institute for Cell Engineering
- Institute for Human Science and Biomedical Engineering

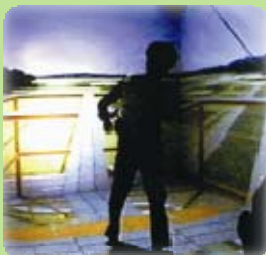
Green Electric Appliances



Ubiquitous
Society

- Diamond Research Center
- Photonics Research Institute
- Nanotechnology Research Institute
- Research Institute for Ubiquitous Energy Devices
- Research Institute for Innovation in Sustainable Chemistry
 - Bio-based Polymers Collaborative Research Team

Dependable System Engineering



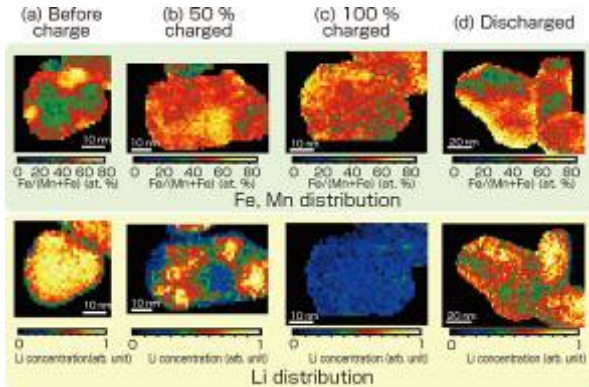
Safe & Secure
Life

- Research Center for Verification and Semantics
- Metrology Institute of Japan
 - Collaborative Research Team of Intelligent Functions
 - Collaborative Research Team for Verification

Recent Topics

Collaborative facilities for verification
 “Satsuki” solved an open problem in computer science.

- Launched providing service of large-scale cluster computers for reliable software technology -

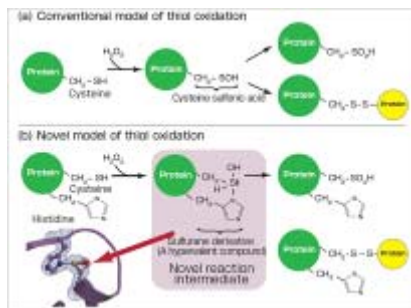
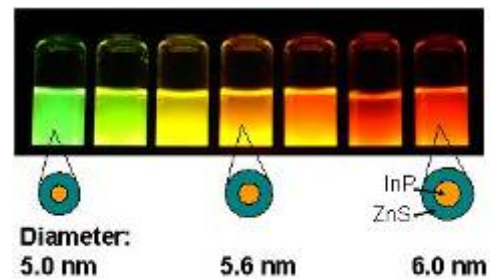


Real-space observation of Li extraction/insertion in positive electrode material for Li-ion batteries

- Toward developing the advanced positive electrode materials for Li ion batteries -

Preparation of semiconductor nanocrystals with high photoluminescence efficiency for labeling in biology

- Cadmium-free nanocrystals enable dynamic observation of a wide range of biological substances -



Novel reaction mechanism to remove reactive oxygen species

- The first hypervalent compound from natural sources -

Leading a domestic high-technology genome research with next generation sequencers

- For the coming individual genome age -

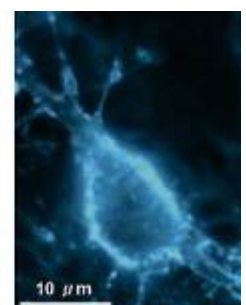
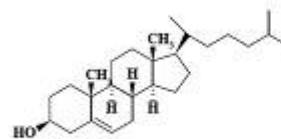


Successful re-activation of human mesenchymal stem cells by transducing single gene

- Leads to the spread of regenerative medicine using stem cells -



Brain-derived neurotrophic factor regulates cholesterol metabolism for synapse development



Other Activities

Exhibitions



Symposia & workshops



Training course for embedded software

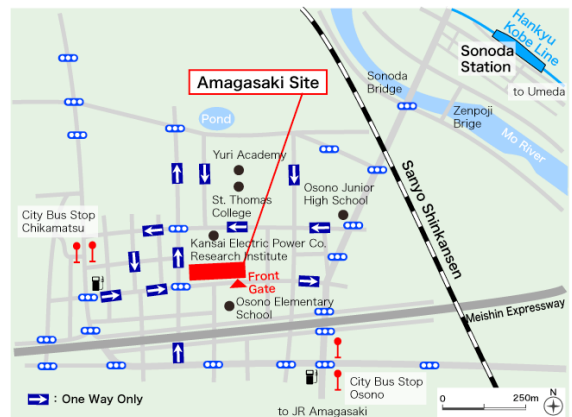


Collaborations with Universities



AIST Kansai is collaborating with more than ten universities located in Kansai area under the similar collaboration programs.

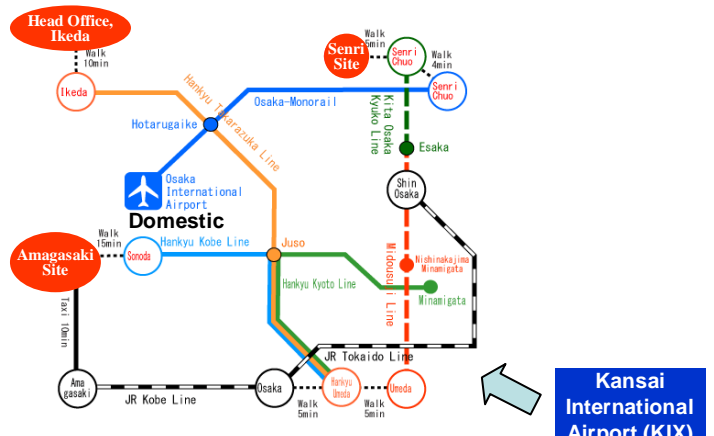
Access



Access to AIST Kansai Head Office, Ikeda

There are many travelling routes from Kansai Airport to AIST Kansai, but we recommend taking a limousine bus from Kansai Airport to Hotarugaike Station. The fare for the bus is 1,700 yen a person. Taxis are available at Hotarugaike Station. It takes 15 minutes and about 1,500yen from Hotarugaike Station to AIST by taxi.

1-8-31, Midorigaoka Ikeda,
Osaka 563-8577 Japan
<http://unit.aist.go.jp/kansai/>



<http://www.kansai-airport.or.jp/en/index.asp>