

# How to install Xenoppix on WindowsXP/2000

<http://unit.aist.go.jp/itri/knoppix/xen/index-en.html>

Xenoppix Development Team at AIST

## 1. INTRODUCTION

Xenoppix can be installed on WindowsXP/2000 File System (NTFS or FAT) and made multi-boot using “grubinstall.exe”. It doesn't require extra partition to install Xenoppix(linux). The installer and Xenoppix is packed in a ZIP file.

## 2. REQUIREMENT

### Xenoppix ZIP file (2 vesion)

based on KNOPPIX4.0.2 DVD (3.2GB):

knoppix\_v4.0.2DVD\_20050923\_xen-20051104+IPAFont.zip

based on KNOPPIX 4.0.2 CD (1.1GB):

knoppix\_v4.0.2CD\_20050923\_xen-20051118+IPAFont.zip

**OS: Windows XP or 2000**

**Disk Space:**

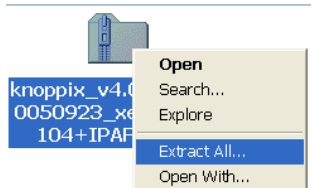
4GB for Xenoppix based on CD-KNOPPIX

8GB for Xenoppix based on DVD-KNOPPIX

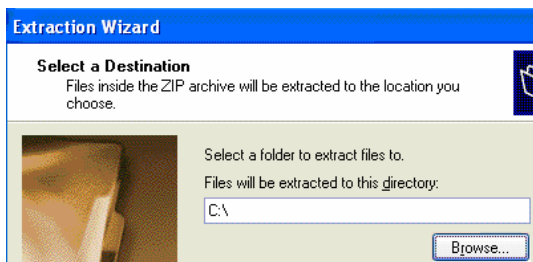
## 3. INSTALL

**STEP1** Download a zip file of Xenoppix.

**STEP2** Right click the ZIP file. Select "Extract All" at the menu.

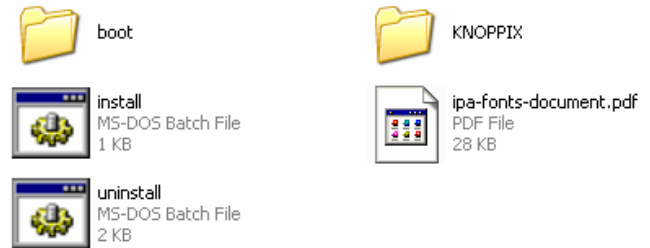


**STEP3** Follow the extraction menu. Select a directory to install. (Example “C:”)



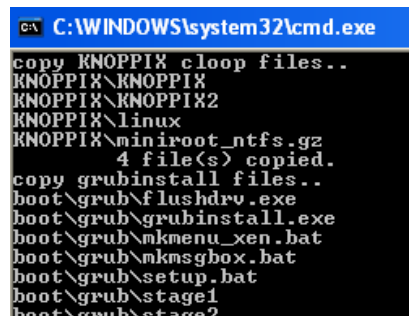
**STEP4** Find “knoppix\_xen” directory and move to it.

Find the following files and folders.

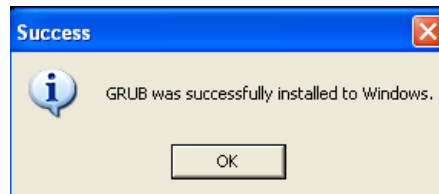


Double left click “install” file. It starts installation of Xenoppix. It takes much time. Please wait.

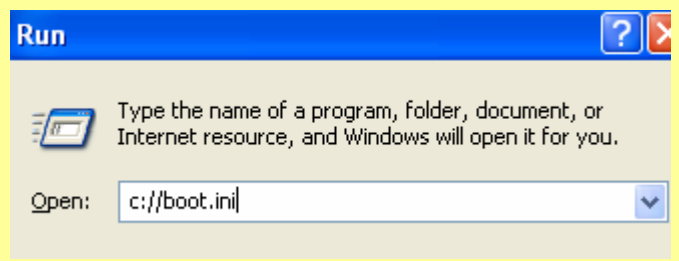
The status of installation is shown at cmd window.



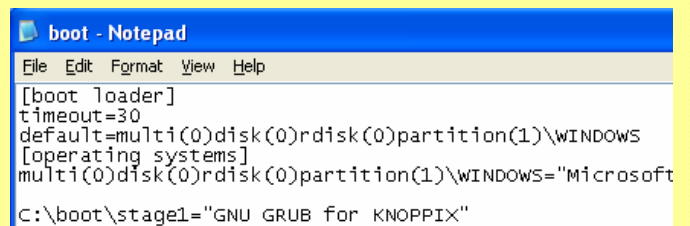
After installation, you find the “Success” message.



**OPTION:** You can check the Windows Boot Loader.

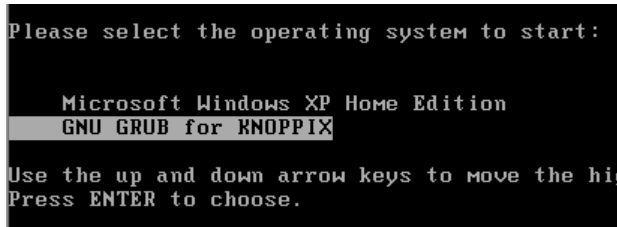


You find “GNU GRUB for KNOPPIX” at the last line.

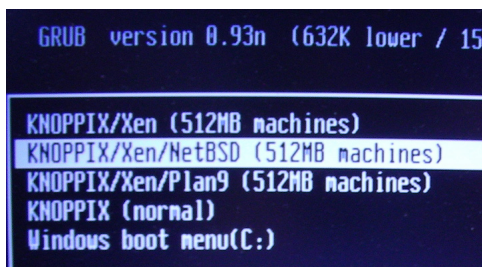


#### 4. BOOT Xenoppix from Windows FS

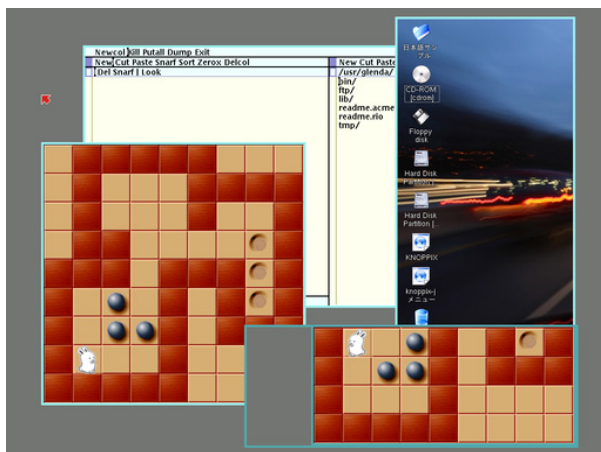
Boot the installed PC. You find the Windows BootLoader “NTLDR” Menu. Select “GNU GRUB” to boot Xenoppix.



After that you find GRUB Selection menu. You can boot NetBSD or Plan9 as a GuestOS. You also boot Knoppix with Xen-kernel or normal KNOPPIX. “Windows boot menu” returns to NTLDR.



Example, Plan9 on Xen.



#### 5. BUG

GRUB fails to get a menu form Windows File System when switching to NTLDR to GRUB. At that time you find the following message.



At that time, please reboot.

#### Reference

GRUB installer for windows:

[http://www.geocities.com/lode\\_leroy/grubinstall/](http://www.geocities.com/lode_leroy/grubinstall/)

Install2win of KNOPPIX

<http://unit.aist.go.jp/itri/knoppix/win/index-en.html>